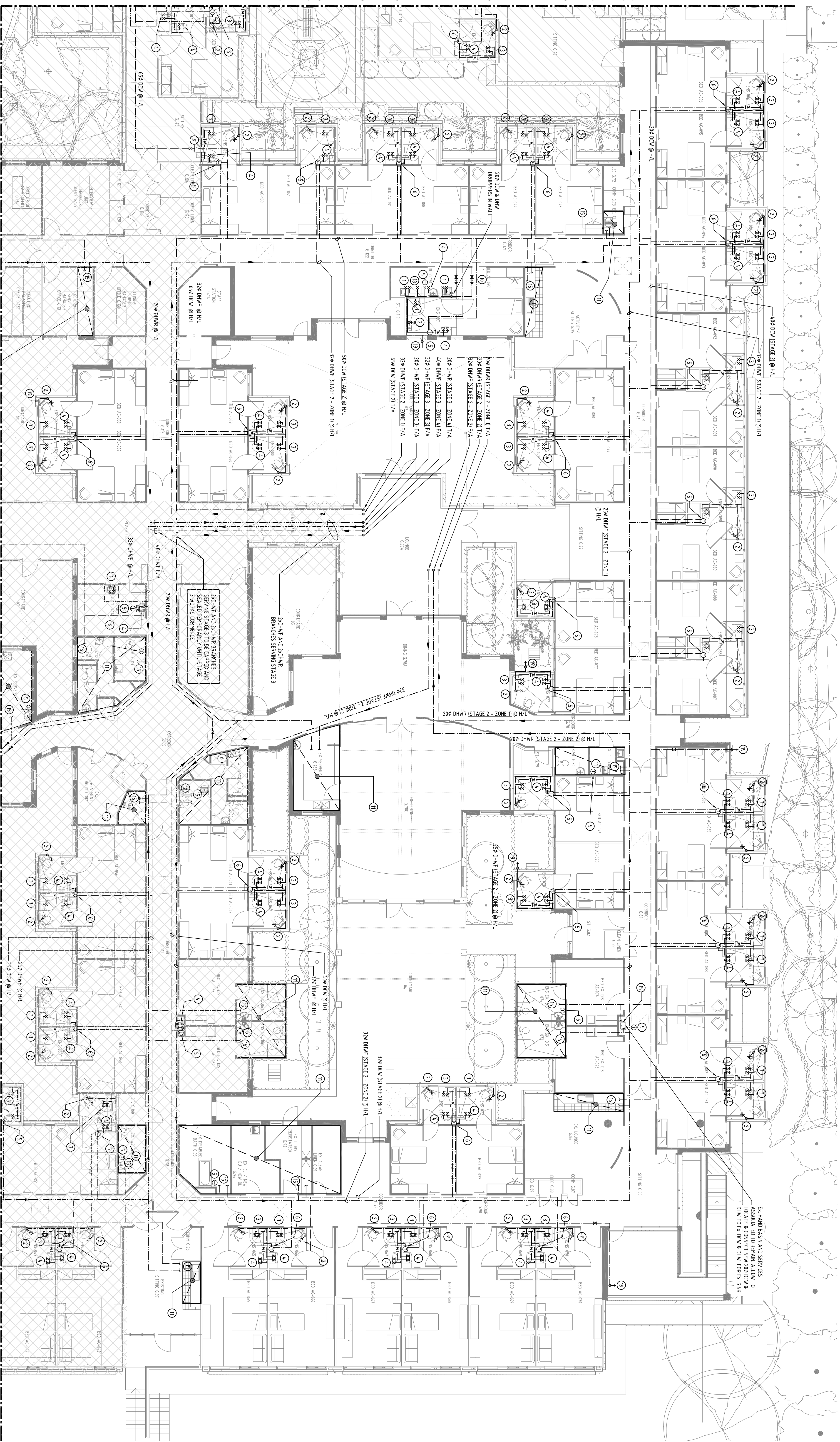


FOR CONTINUATION REFER TO DRAWING No. H007



DRAWING NOTES:

- 1 15# SHIM AND 1/8" JOIST W/ 240 SHIM & DOCK DISPOSE IN WALL
- 2 15# DOCK TO WC CISTERN WITH STOP VALVE WITH 240 SHIM DISPOSE IN WALL
- 3 15# 1" TM AND DOCK TO SHOWER LAP
- 4 15# 1" TM AND DOCK TO BATHN LAP
- 5 20# DOCK AND BATH BRACKET DOORS TO KICK 1/5# 1/8" TMV LOCATED CABINET RECESSED IN WALL, RELOCATE 1/5# TMV AND 15# DOCK TO NSM.
- 6 20# DOCK AND BATH BRACKET DOORS TO KICK 20# 1/8" TMV LOCATED CABINET RECESSED IN WALL, RELOCATE 20# TMV AND 15# DOCK TO NSM AND SHOWER
- 7 20# 1" TM AND 15# DOCK WITH WALLCING BRACKET & SIGN AT RATCHED ABOVE STAIRING NOT FOR DRINKING WITH 20# TM DISPOSE IN WALL (STAIRS - ONLY)
- 8 EX. 1/4" TO REPAIR APPROX. LOCATION
- 9 CONNECTION
- 10 65% DOCK BRANCH FOR STAGE 2 FCW
- 11 20# 3/4" & 1/2" DOCK ROPE TO PROTECT IN STAINLESS STEEL END FLOOR WITH LEAK WARNING PANEL
PEZD COVER: 1700 20MM (NO. 2029130) CABINET & PERSPEX GLASS: 1700 20MM (NO. 6804300) SHIM
KEEP CUT IN WALL REQUIRED (ON ALL 4) TO WATER BOB
REF: 1/11/2009 1555: 1619
- 12 FURTHER A ASSOCIATED DOCK & BATH SERVICES TO BEKIN
ALLOW TO LOCATE & CONNECT NEW 3/4" DOCK & SHIM TO EX. 1/4" TMV & FLOOR IN RATCHED
- 13 EX. APPROX. LOCATION TO REPAIR DURING STAGE 1, 2 & 3
TO BE REBUILT AND CUT & SCALED HAVE REDUNDANT
DRAINING SYSTEM. WORKS UP TO DRAIN 100"

- [illegible]

FOR CONTINUATION REFER TO DRAWING No. H009

KEY PLAN

HOT WATER SERVICE ZONE

[illegible]